



Batten & Cradle

Flooring Systems Ltd



DekCradle

Batten & Cradle specialist flooring solutions:

- ❏ Made from 100% recycled tyres
- ❏ Simple to Use
- ❏ A solution to dampness, noise reduction, and uneven floors
- ❏ Deck protection from sun deterioration and traffic wear
- ❏ Safely lay on top of waterproof membranes
- ❏ Acoustic qualities (less impact noise/transmission to lower levels)
- ❏ Lay any overlay on top of bearers (Decking, Plywood, Fibre Cement Board, Ceramic tiles)
- ❏ Not suitable for acoustic applications

Further information and specifications overleaf or

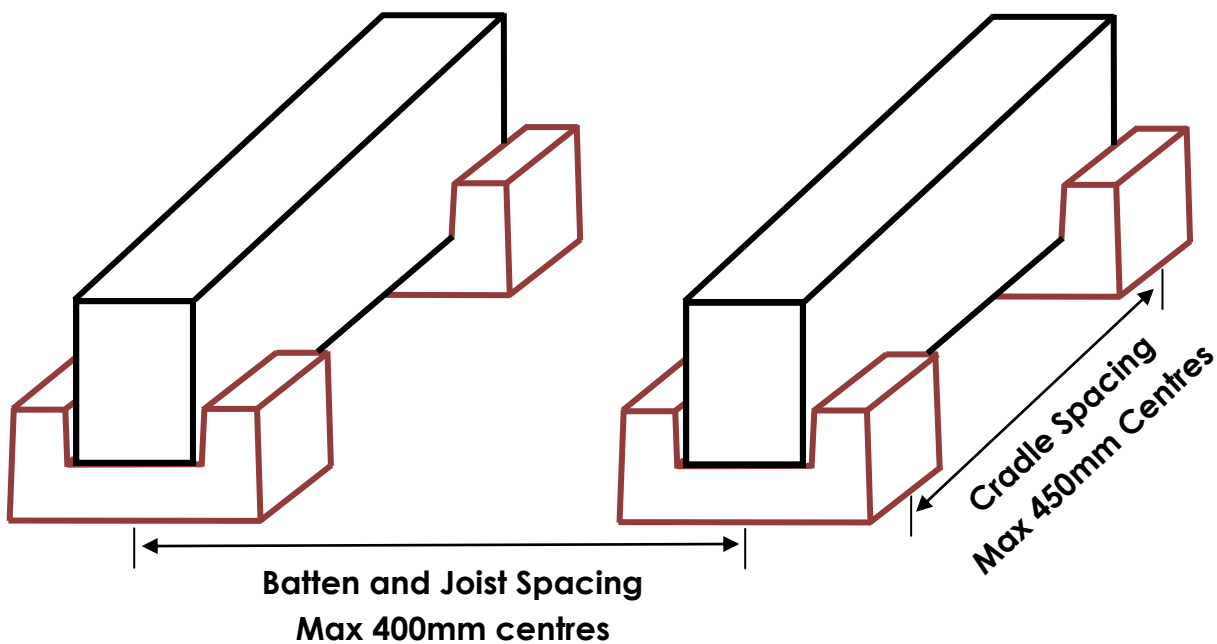
Visit our website: www.battenandcradle.co.nz

Email us: info@battenandcradle.co.nz

P. 09 304 2083

Basic Specifications

- Construction should always confirm to accepted building practices and NZS 3604.
- Batten or joists should be a minimum of 50mm wide and 40mm high.
- If used outside, they must have a minimum treatment of H3.2
- Cradles are to have a maximum spacing of 450 centres.
- Batten spacing is to be a maximum spacing of 400 centres.
- Fastenings of deck or other overlay materials are to be as per manufacturers specifications.



For any further technical advice, email our Technical Manager:

peter@battenandcradle.co.nz or call Peter on **027 4521 831**

For Quick Tips and FAQs, please refer to our website.



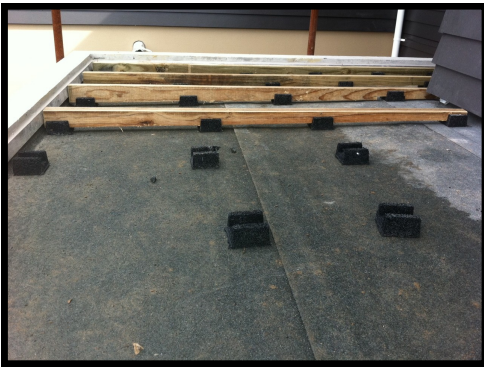
www.battenandcradle.co.nz





Basic Installation

- ❏ The site must be clean and free of waste.
- ❏ The cradles sit on the surface with no need of glue.



- ❏ Plan layout of your cradles to meet the spacing of no more than 450mm centres in length and no greater than 400mm centres wide.
- ❏ Ensure cradles are placed no greater than 50mm from an outside extremity, ensuring load support is covered around external edges.
- ❏ Cradles must be laid parallel.



- ❏ Joists may need to be ripped to make up for variations in floor height or for fall of deck surface.
- ❏ If floor surface is not level, use timber or ply H3 treated shims, or wedges within the DekCradles to place under the joists, from either end of the cradle.
- ❏ Shims are to be within the DekCradle and glued to the joists with timber approved glue. (No glue to be put on DekCradles). Do not shim between floor surface and bottom of DekCradles.



- Place all joists in the DekCradles, and level.
- Prior to installing preferred decking surface, check for appropriate fastenings specification.
- Install your decking timber or preferred surface following appropriate building practice, and product specifications.
- All fastenings of preferred deck surface are to be connected to joists, not the DekCradle as per manufacturers instruction.

Building Criteria

- Joists must be a minimum nominal of 50mm width, H3 treated.
- Dekcradle are spaced at no greater than 450mm centres in length.
- Joists following building code spacing of no greater than 400mm.
- DekCradles must be installed in conjunction with the product specifications of your preferred decking surface.
- DekCradle should ONLY be used in appropriate solutions.

If in doubt email: peter@battenandcradle.co.nz