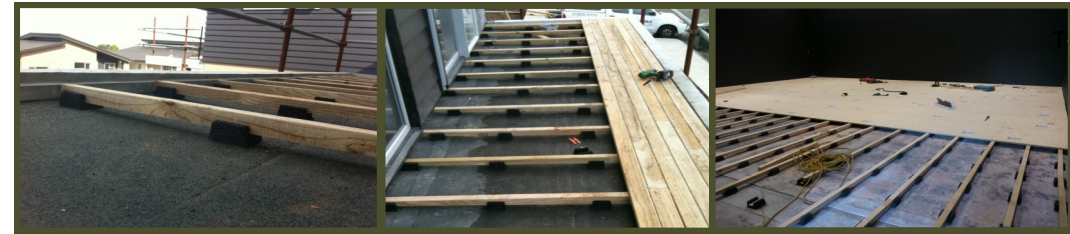
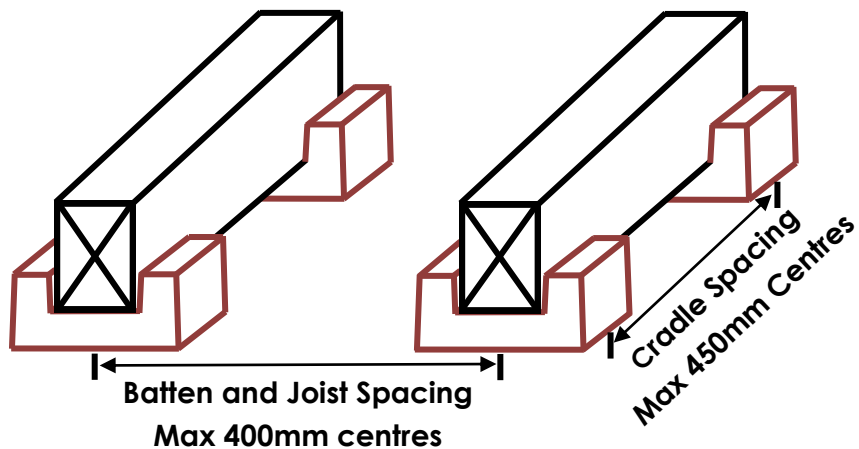


Basic Specifications

- Construction should always conform to accepted building practices and NZS 3604, and this must always be checked, if in doubt.
- Batten or joists should be a minimum of 50mm wide and 40mm high. Most use 100 x 50 MSG No1 KD for internal use.
- If used outside, minimum treatment of H3.2 CCA.
- Cradles maximum spacing of 450mm centres, and are not glued or fastened to membrane.
- Battens maximum spacing of 400mm centres.
- Fastenings of deck or other overlay materials are to be as per manufacturers specifications.



Basic Installation

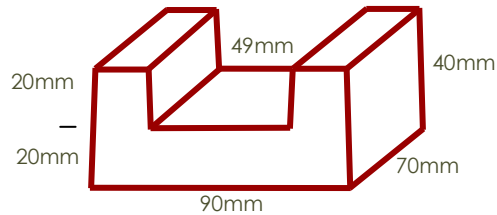
- ✓ The site must be clean and free of waste.
Most builders will use a laser level to verify level placement.
- ✓ Plan the layout of your cradles to meet the spacing of no more than 450mm centres in length, and no greater than 400mm centres in width.
- ✓ Ensure a cradle is placed no greater than 50mm from an outside extremity, to ensure load support is covered around external edges.
- ✓ Cradles must be laid parallel.
- ✓ Joists may need to be ripped to make up for variations in floor height or for fall of deck surface.
- ✓ If floor surface is not level, use timber or ply H3 treated shims, or wedges within the DekCradle to place under the joists, from either end of the cradle.
- ✓ Connect the shim, with a dab of timber approved glue, to the joist, not the DekCradle. The shim cannot be packed up higher than 10mm.
- ✓ Do not shim between floor surface and the bottom of DekCradle. Place all joists in the DekCradle, and check for level. The extreme between timber and side of cradle is planned.
- ✓ Install your decking or chosen surface following the appropriate building practice and product specifications. Please check before installation for the appropriate fastenings specifications.
- ✓ All fastenings of your top surface material must be connected to only the joist, not the DekCradle as per manufacturers instruction.

Building Criteria

- Joists must be a minimum nominal of 50mm width, H3.2 treated.
- Dekcradle are spaced at no greater than 450mm centres in length.
- Joists following building code spacing of no greater than 400mm centres.
- DekCradle should only be used in appropriate solutions. For technical support email: peter@battenandcradle.co.nz.
- DekCradle installation must be installed in line with the product specifications of your chosen top surfaces.

Product Specs

DekCradle- Brown



* Not Drawn to Scale.
For Measurement Purposes Only.

- Designed to take dressed, H3.2 timbers for external use.
- We recommend MSG 8 graded timber base for bearers.
- 100 x 50 Nominal giving a 47mm finish allowing 1mm either side inside the cradle.
- This allows the timber bearers to be removed for trimming without disturbing the cradle position.
- Rough sawn Nominal 100 x 50 can be used and squeezed inside.
- The DekCradle can be used both internally and as per its specific design for exterior use.
- Brown in colour to ensure no mistaken use against other cradle.

Acoustic Cradle- Black

- Designed for the installed proprietary solution, using a specific machined finger



AUCKLAND | Level 1, 20-22 Gundry Street, Newton |
P. 09 304 2083 | www.battenandcradle.co.nz



- ✓ Made from 100% reclaimed rubber
- ✓ Simple to use with productivity gain
- ✓ A solution to dampness, noise reduction, and uneven floors
- ✓ Deck protection from sun deterioration and traffic wear
- ✓ Safely lay on top of trafficable waterproof membranes
- ✓ Acoustic qualities (less impact noise/transmission to lower levels)
- ✓ Lay any overlay on top of bearers (Decking, Plywood, Fibre Cement Board, Ceramic tiles)

Technical Questions? Contact Peter Huston
M. 027 4521 831 | E. peter@battenandcradle.co.nz



EASY TO INSTALL



1.



3.



2.



4.